

## 1973

Spring Camp dates opened on June 1<sup>st</sup>, 1973 with F. A. Isaacs, Doug Lauder, Al Balfour and Keith Balfour working like Trojans getting Camp into shape. A new screen door on the kitchen, grass cutting, putting grates on fireplace chimney, cutting wood, general sweeping and cleaning of cabins, work on the power plant and installing the new Mercury motor brought up to Camp by Fred A. Isaacs. This was followed by fishing, eating and fun.

Summer Camp rates were \$14.00 per day for Members and \$18.00 per day for guests. Off season rates were \$5.00 per day.

Cooks for 1973 were Alice and Albert Bottrell. They entered Camp on June 18<sup>th</sup> to get ready for the first Camp, Les Server group, coming in June 22<sup>nd</sup>.



The foundations were replaced on the Pulling and Kenogan cabins during 1973 & 1974. The green asphalt siding was installed over the old black siding on all the cabins. Plans were set to have Kenny Hayward put the Mag and Cooks' cabin close together and a spring work party was to attach the two units on new foundations in the 1974-75 winter season to give the Cook's more suitable accommodations.



In late August, Joe Kinnear had an accident in the Betty Lou, causing a hole in the front bulkhead. Joe felt responsible for the damages and prepaid the estimated \$70.00 for the repair. The Board of Directors looked into insurance coverage for the damage and noted Joe would be refunded if it was covered. No record of the refund was found by me.

The Annual General Meeting was held on November 9<sup>th</sup>, 1973. The group had trouble getting to the meeting due to a snow storm in London but all arrived ½ an hour late at worst. The membership would not pass the purchase of new boats and all present boats were to be once again restored as well as possible except for the Hyah which definitely was not to be worked on. The Bottrell's were hired for the 1974 season and given a \$200.00 raise to \$1,300.00 per season. Summer Camp rates were increased to \$16.00 per day for Members and \$20.00 per day for guests and off season Camps were \$5.00 per day for the forthcoming 1975 season. Five new members were nominated in October 1973 for 1974 memberships which caused the maximum number of members allowed to be increased to 50. The Bottrell's salary was increased to \$1300.00 for the 1974 season. Rates for the 1974 season were increased to \$15.00 per day for members and \$20.00 per day for guests. Due to some discussion and misunderstanding regarding the use of boats by other during deer season, a member threatened to resign. It was moved by O'Grady and seconded by Thorton that any such resignation not be accepted.

The Board of Directors met immediately after the Annual General at 11 pm. They set up a Buildings and Facilities Committee in accordance with member adopted resolution and placed L. Sever as Chairman. They decided to advance the cook \$100.00 for the supplies in 1974. Replacement of stove pipes was authorized and they were looking into replacement cast iron stove prices. The purchase of 12 new Dacron and foam pillows was authorized. The date for the next Annual General Meeting was set to be on the last Friday in October to try to avoid the bad weather encountered by the London group. Doug Lauder was assigned the task of transferring papers to Morton's Point with the lawyers.

Resignations (1) Vern Hanna died December 1972, R. Hubbell resigned January 1973.

New Members (4) Doug Powers, Gord Dean, Rob Haddow, John Fitzpatrick Jr.

As of November 9<sup>th</sup>, 1973 there were 47 members including the new members above.



Picture supplied by Ned Riley.

#### Information on Wahwashkesh Lake

Year the lake was surveyed	1973
Lake Size in hectares	(1 hectare=2.47 acres) 999.9
Average Depth (m)	12.1
Maximum Depth (m)	45.4
Lake Perimeter (shoreline length in kilometers)	106.2

Percent of lake shoreline fronted by Crown Land 30%  
(Note: this is a rough approximation determined at the time the survey was completed)

Number of resorts on the lake at the time the survey was completed 5

Number of cottages on the lake at the time the survey was completed 175

Fish in lake

yellow perch

northern pike

smallmouth bass

largemouth bass

rock bass

sunfish

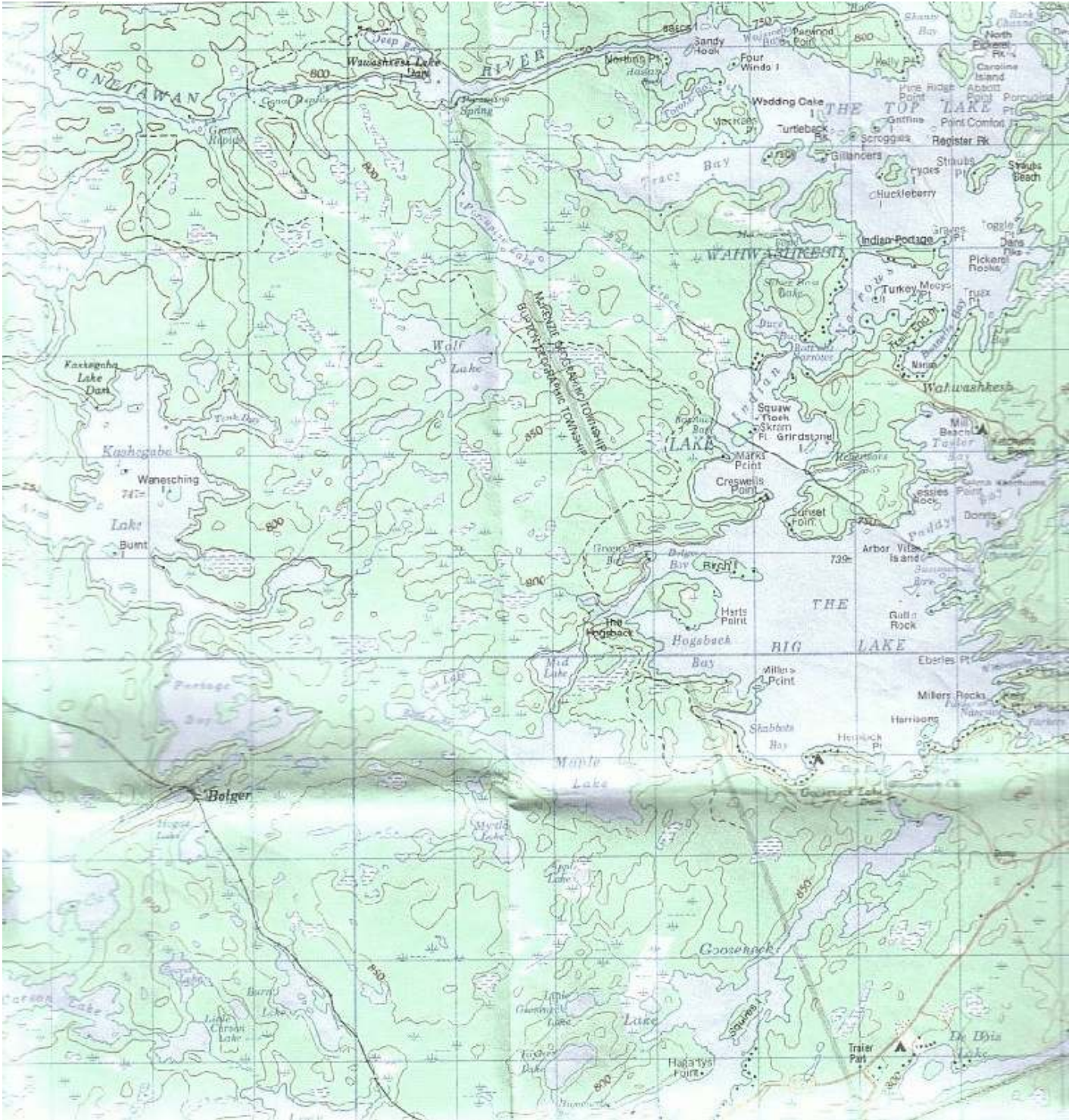
white sucker

lake whitefish

lake trout

brown bullhead





Last Modified May 28, 2012.