

1946



Old porch. Ed Kenning in middle. Date of picture unknown.

The large project for (1946) the camp's improvements this year was the addition of the front porch. Construction of the porch was ordered by the members to be undertaken by Guy Hayward and assisted by members. The interior dimensions of the porch are 11'8" deep by 28'6" wide. The heavy construction took 2 years and was finished by the end of the season in 1947.



Construction underway 1946.



Main Lodge
Picture July 1998

John Haddow Sr. and Fred Isaacs started coming to Camp this year but were not immediately shareholders. They became members / shareholders on May 22, 1952. John Haddow Sr. resigned as a member on March 26th, 2000 but said he would continue to go as a guest for as long as he could. Fred Isaacs is still an active member (April 22, 2000)

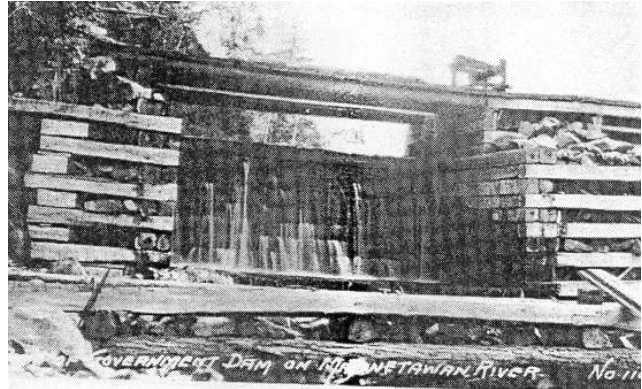
The Buchanan Jr. 4, the second motor in the Hyah-Hyah, which was damaged in 1945, was replaced with a new motor by Guy Hayward in trade for the Buchanan Jr. 4.

Card tables and chairs were purchased for use in the main lodge. The Peterborough Canoe Co. of Canada Ltd. was asked to supply a row boat suitable for a 5.5 HP motor along with 4 paddles and items to repair the canoes in Camp. Even though their had been a lot of money spent on the repairs and maintenance this year, the loss situation was only \$227.50.

The ice supply ran out part way through the season this year and the group decided to have Mr. MacRae or Wes Albrook do it for the following season.

Off season Camps were discussed in September 1946 and the Board decided to stop them as the insurance policy did not supply coverage for off season visits. The policy was reviewed and was updated to cover the buildings and boats etc. in October 1946.

The government, Engineer of the Department of Public Works, was to repair or replace the dam in the fall or spring of 1947 due to the low water level this year. Mr. Kenning made arrangements with M. P. P. Rev. Mr. Davies and went into Toronto and spoke with the engineer to go into this matter more fully.



The last control dam on the “Mag” just below Wah Wash Kesh. It went out in 1946-47. (Thompson photo)

The cook this year was Les Steeves.

Resignations (3). W. R. Mitchell died September 22, 1946, Larry Andrich died September 10, 1946, Alexander Douglas Willis Leach died November 8, 1946.

New Members. (2) William M. Wright, William J. Haslam.

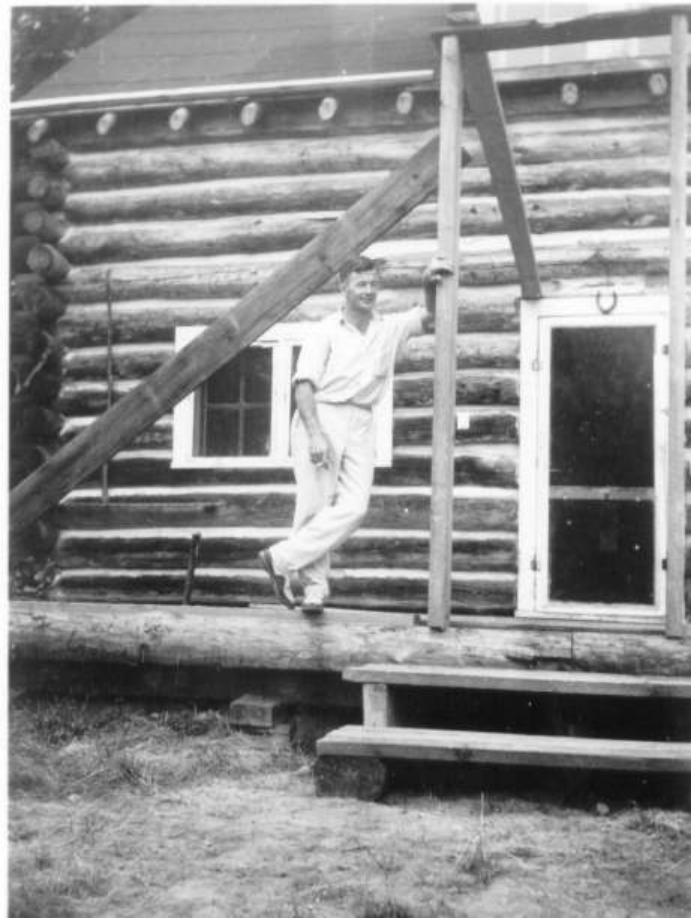
More porch pictures...



Old porch removed and framing of new porch started.



Sure were a lot of building inspectors around.



Smoke break.



Cutting the grass was not on the agenda.



One log at a time.



First 4 rows completed.

This was a large project.





Final stages of construction.

Doesn't need a haircut. He's torn it all out from the stress of the job!!!





Thank God we are finished. Let's enjoy this damn thing now!!!!

WHO'S BUYING THE BEER?????

Last modified May 28, 2012.